



DIA PROFESSIONAL APPROVED

LESSON RECAPS - 1



Cockpit Drill

Get in and close the door. Check the parking brake is applied.



Are all the doors closed?



Adjust the seat and head restraint. Can you reach all the controls comfortably?



Adjust the mirrors.

Mirrors

Interior: Flat glass

Exterior: Curved glass



What does MSM mean?

Parking Brake



Only for use when the vehicle has stopped. May be operated by a lever, an extra foot pedal or push button.



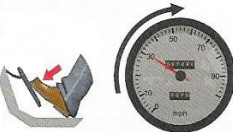
Seatbelt on.



Fuel/charge?

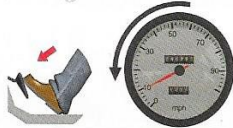
Foot Controls

Accelerator



Pivot right foot between gas/brake.

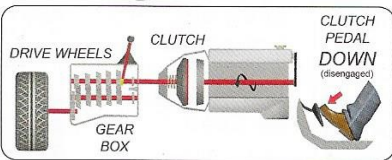
Footbrake



Clutch



Only operate with your left foot



CLUTCH PEDAL DOWN (disengaged)

Gears



Speed ranges overlap allowing minimal engine strain and increased fuel economy.



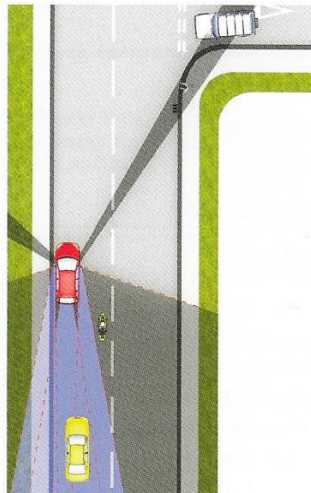
How do you know when to change gear?
How do you get best fuel use with gears?

Moving off

PREPARE: Find the bite point.



OBSERVE: Use mirrors and look all round to check blind spots.



SIGNAL: If necessary.



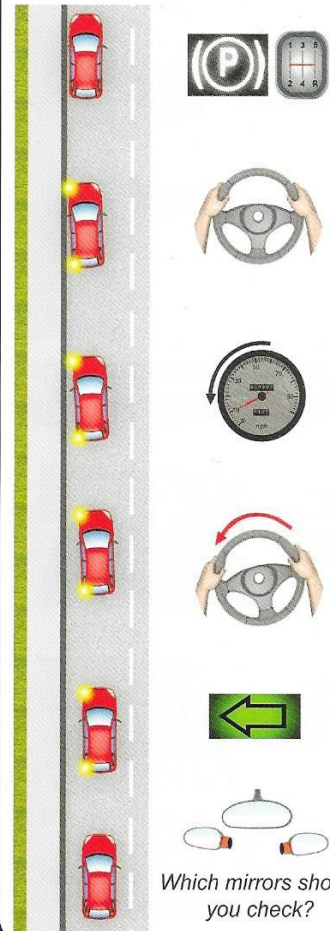
Be ready to release the parking brake.

Remember your final safety check!



Normal Stops

Use the MSM routine.
Safe, legal and convenient?



Which mirrors should you check?

Automatic transmission



No clutch pedal

- Park
- Reverse
- Neutral
- Drive
- Manual



Steering

TURNING LEFT

TURNING RIGHT



Hold the wheel at 'ten to two' or 'quarter to three' position.

Use the 'Pull-Push' method.

Never take both hands from the wheel when the car is moving.

