

Hazard Routine: MSPSL

You know this routine as **Mirrors - Signal - Manoeuvre!**

A manoeuvre is any change in position or speed so **M-S-M** becomes:

Mirrors: Check position/speed of following traffic. Act sensibly on what you see!



Signal: Ask yourself "Will a signal help others?" If you need a signal, give it in good time.



Position: If necessary, steer to a new road position in good time so that others can anticipate what you intend to do.



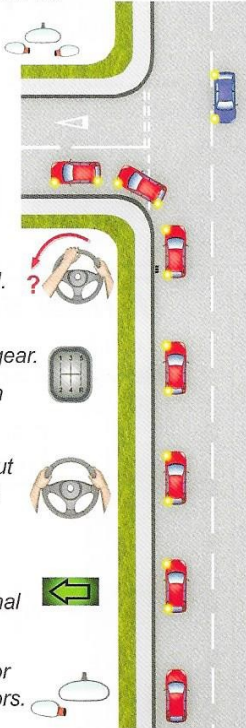
Speed: Slowing down, ease off the accelerator or brake. If you need to speed up, accelerate smoothly. If needed, change gear for greater control.



Look: Look well ahead. Assess the situation. Decide on what you need to do. Act promptly on your decision to wait or proceed.

Left turn

Use MSPSL



Look into the side road.

Select appropriate gear.

Slow down in good time.

Position about a metre from the kerb.

Give an indicator signal

Check interior and left mirrors.

Right turn

Use MSPSL

Give priority to approaching traffic.

Look into the side road.

Select appropriate gear.

Slow down in good time.

Position as close to the centre of the road as is safe.

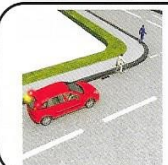
Give a signal.

Check interior and right mirrors.



How do you judge your point of turn?

How do you judge it is safe to turn?



How should you deal with pedestrians and cyclists at junctions?

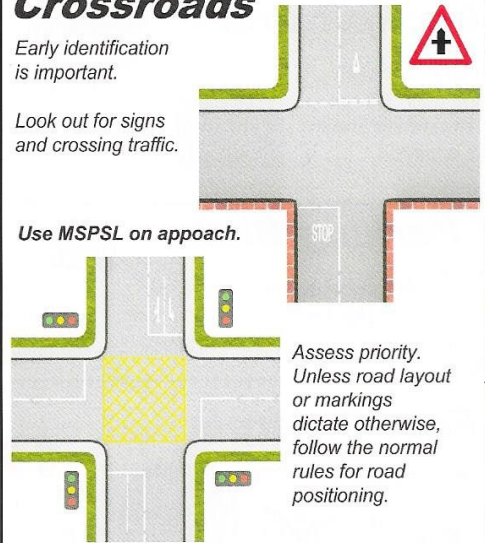
Crossroads

Early identification is important.

Look out for signs and crossing traffic.



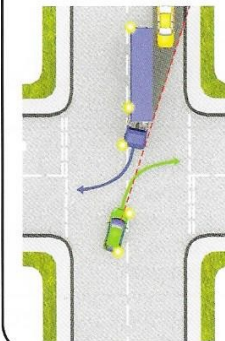
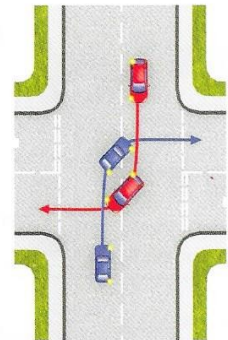
Use MSPSL on approach.



Assess priority. Unless road layout or markings dictate otherwise, follow the normal rules for road positioning.

Remember that traffic approaching from your right or left may not realise the junction is a crossroads.

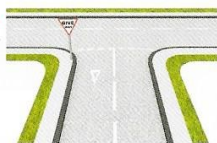
If you and an approaching driver are turning right, turning offside to offside is safer because you have a better view.



When conditions dictate (e.g. space is limited) turn nearside to nearside. Take care, your view will be restricted.

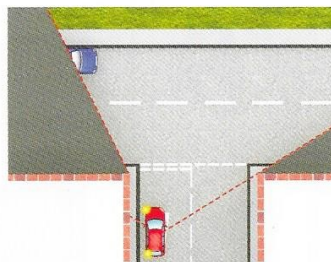
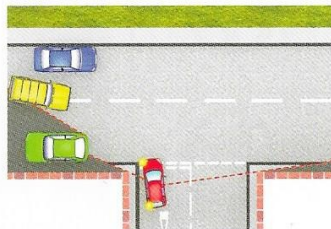
Emerging at T-junctions

Use MSPSL on approach. Scan left and right as you approach the junction to build up a picture of the traffic flow and other hazards in the main road.



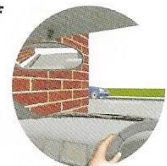
As you come up to the end of a road ask yourself:
Is the junction open or closed?
Who has priority?

Your zone of vision will get wider as you approach the end of the road. The diagram on the right shows that you will not be able to decide if it is safe to emerge until your eye line is level with any obstructions.



Where your line of sight is restricted:

Edge forwards by using clutch control (peep and creep).



Lean forwards in your seat so the front of the car doesn't need to stick out so far.



Beware of emerging left whilst looking to your right